

BIG INCH

Stronger, Smarter, Better



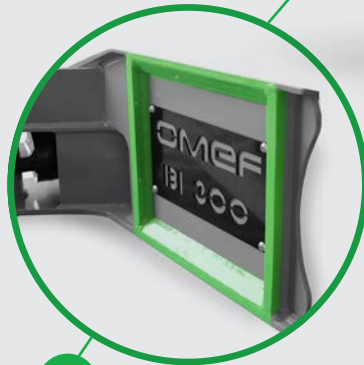
1

Extended lever arm
Increased cutting power.
Felling and holding of the tree in a single action



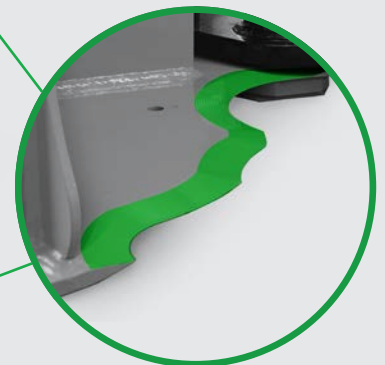
4

High-performance cylinder
Simplified control thanks to the use of a single hydraulic line



3

Reinforced structure in XAR400
Compactness, lightness, resistance and safety



2

Integrated blade with 4 welding steps
Shaped profile in XAR500, tested for greater cutting efficiency on all types of wood

www.omefgroup.com

	BI100	BI200	BI300	BI400	BI500	BI600
	1,5 - 3 tons	2,5 - 8 tons	7 - 18 tons	14 - 24 tons	23 - 40 tons	30 - 50 tons
	140 Kg 310 lbs	230 Kg 507 lbs	420 Kg 925 lbs	845 Kg 1862 lbs	1810 Kg 3990 lbs	2400 Kg 5291 lbs
	40 mm 1,5"	50 mm 2"	60 mm 2,5"	120 mm 5"	200 mm 8"	270 mm 11"
	150 mm 6"	200 mm 8"	300 mm 12"	400/450 mm 16" / 18"	500/600 mm 20" / 24"	600/700 mm 23" / 27"
	180-250 bar 2610-2900 psi (min-max)	180-250 bar 2610-3625 psi (min-max)	180-300 bar 2610-4350 psi (min-max)	250-350 bar 3625-5075 psi (min-max)	300-350 bar 4350-5075 psi (min-max)	320-400 bar 4640-5800 psi (min-max)
	25-60 l/min 7-16 gal/min (min-max)	30-80 l/min 8-21 gal/min (min-max)	50-120 l/min 13-32 gal/min (min-max)	80-150 l/min 21-40 gal/min (min-max)	180-300 l/min 48-80 gal/min (min-max)	250-300 l/min 66-80 gal/min (min-max)
Width	800 mm / 31"	890 mm / 35"	1115 mm / 44"	1455 mm / 57"	1640 mm / 65"	1965 mm / 77"
Length	775 mm / 30"	1010 mm / 39"	1240 mm / 49"	1500 mm / 59"	1860 mm / 73"	2057 mm / 81"
Height	420 mm / 16"	462 mm / 18"	552 mm / 22"	707 mm / 28"	892 mm / 35"	1021 mm / 40"

ACCESSORIES



SECOND GRAB



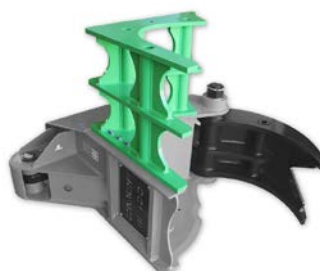
ROTATION 360°



RIPPER



BUNCHER



HOLDER



CRANE ADAPTER "OMEF SWING"